



# GAT MONTHLY MEMBERSHIP PROGRESS REPORT

Results as of: 6/30/2023

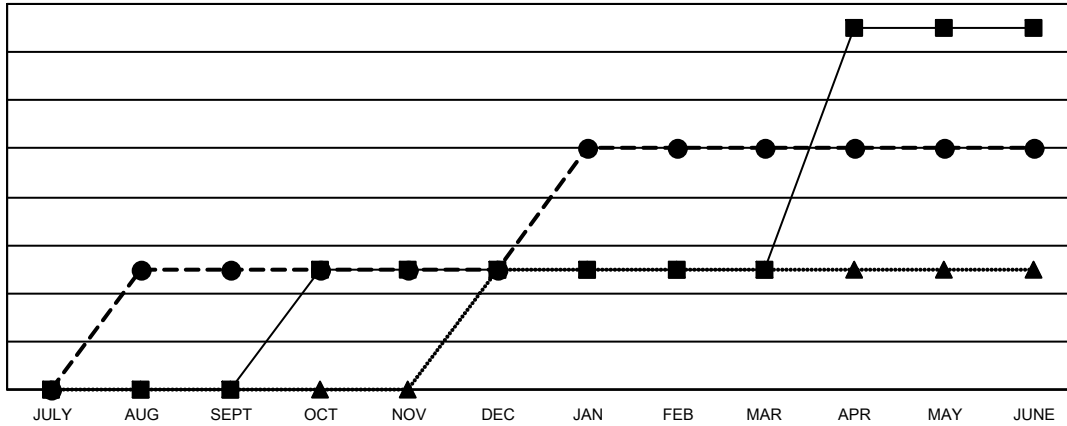
Multiple District 22

LOCATION: MARYLAND

Clubs			
RESULTS FOR 2022-2023			
QUARTER	NEW CLUB GOAL	NEW CLUBS	DROPPED CLUBS
JULY/AUG/SEPT	0	1	0
OCT/NOV/DEC	1	0	2
JAN/FEB/MAR	0	1	0
APR/MAY/JUNE	2	0	1

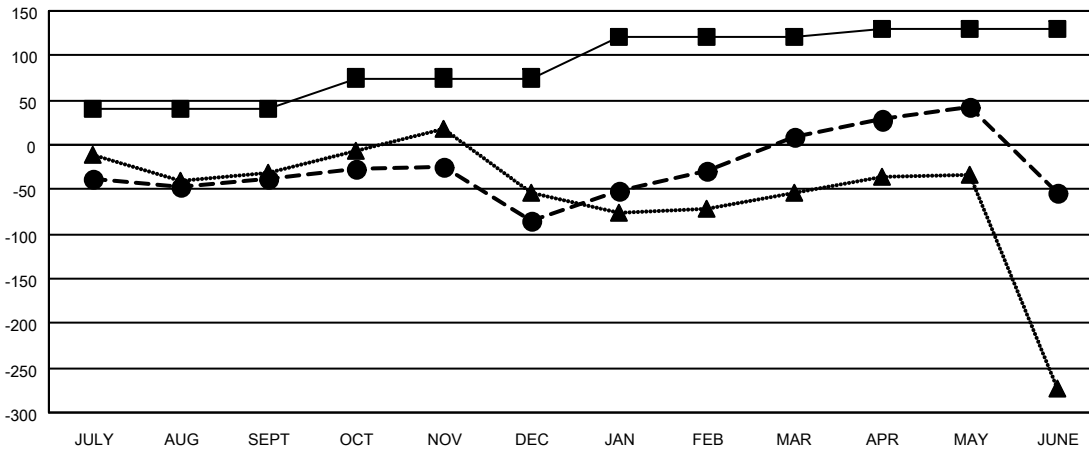
Members			
RESULTS FOR 2022-2023			
QUARTER	MEMBER GROWTH NET GOAL	MEMBER GROWTH ACTUAL	DROPPED MEMBERS ACTUAL (including transfers)
JULY/AUG/SEPT	40	149	159
OCT/NOV/DEC	35	136	175
JAN/FEB/MAR	45	233	121
APR/MAY/JUNE	10	165	209

GOALS AND ACTUAL NEW CLUBS CUMULATIVE



- CURRENT YEAR GOALS FOR NEW CLUBS
- CURRENT YEAR ACTUAL NEW CLUBS
- ▲- LAST YEAR ACTUAL NEW CLUBS

GOALS AND ACTUAL MEMBERS CUMULATIVE



- MEMBER GROWTH NET GOAL
- MEMBER GROWTH ACTUAL
- ▲- LAST YEAR MEMBERSHIP ACTUAL

<b>DROPPED CLUBS: 3</b>	122 CLUBS OF 200 ADDED 1 OR MORE NEW MEMBERS	<b>GENDER DISTRIBUTION</b>
<b>DROPPED MEMBERS</b>	<a href="#">CLICK HERE FOR CUMULATIVE MEMBERSHIP DATA</a>	MALE 3,572 (62.28%)
DECEASED 107		FEMALE 2,161 (37.68%)
CLUB CANCELLED 43		NON BINARY 0 (0.00%)
OTHER 514		PREFER NOT TO ANSWER 2 (0.03%)
<b>TOTAL 664</b>		<b>TOTAL FAMILY UNIT MEMBERS 1,081</b>
		FAMILY MEMBERS PAYING HALF DUES 564